

Welcome!



Collection in Focus Guide Program 2015

Today's Agenda

10:00 – Welcome and introductions

10:30 – Security badge photos and Tour Office review

11:00 – Procedures and Policies

11:45 – meet with current CIF Guides

12:00 – 12:55 LUNCH – ALL GUIDES

1:00 – 2:55 presentation and practice VTS

2:55 – 3:00 assignment for January 22

3:00 – Conclude

NYC TRIP

3:00 – 3:30 Optional - Information session for NYC trip

Getting to know you...



Security Badge

- Keep it with you (purse or billfold)
- Log in and log out each time you enter the museum (Security staff will assist you)
- Access to the Tour Office-Docent/Guide Lounge
- 20 % discount in the Museum Gift Store
- 10% off Agri-Culture Coffee shop and Restaurant
- As your museum ID, it allows you free admission to many local and National museums

Minneapolis Institute of Arts

Mission

The Minneapolis Institute of Arts enriches the community by collecting, preserving, and making accessible outstanding works of art from the world's diverse cultures.

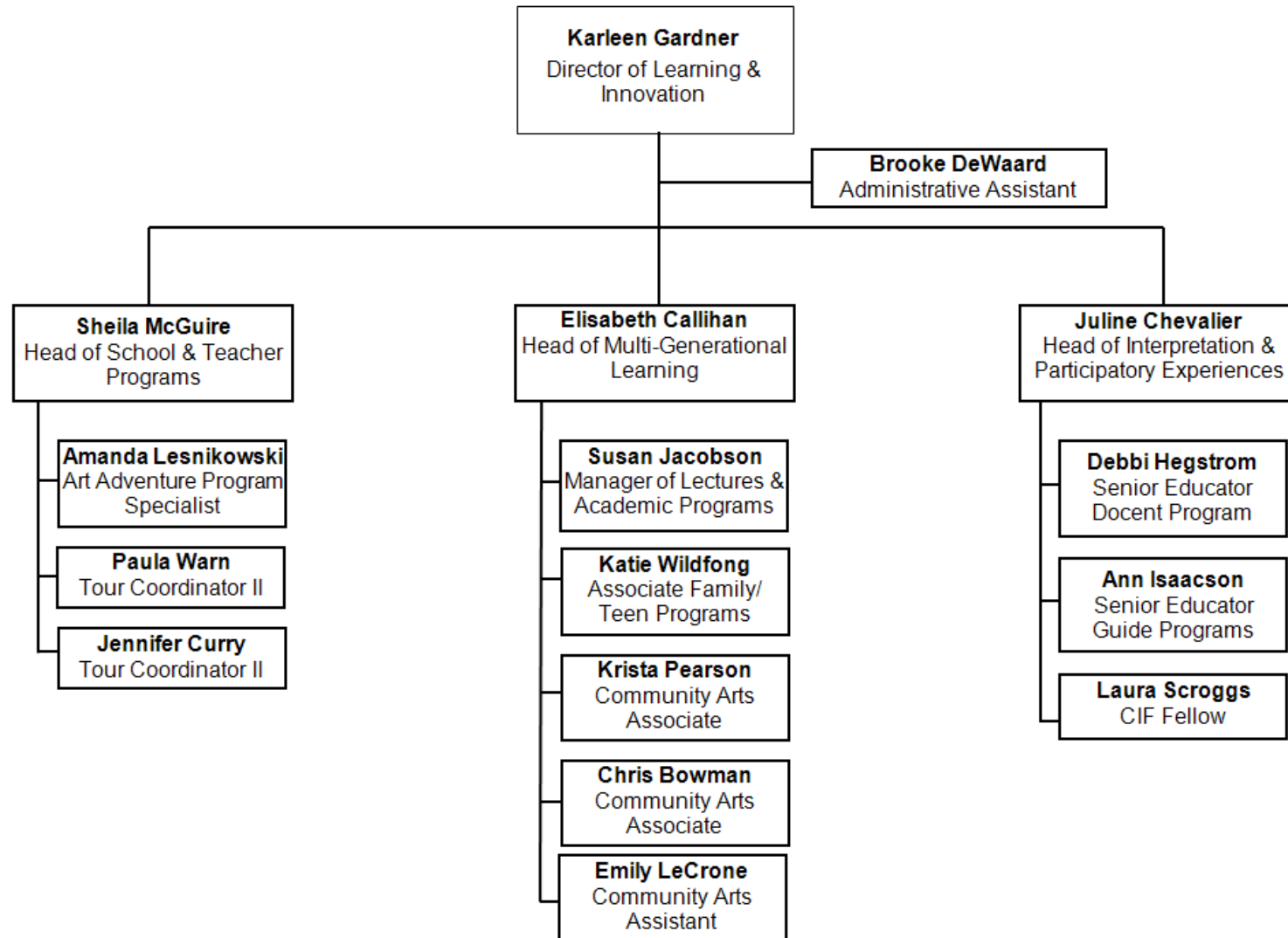
Vision

Inspiring wonder through the power of art

Values

Accessibility, Excellence, Respect, Preservation,
Creativity, Learning, Integrity

**Minneapolis Institute of Arts
Learning & Innovation Division
Organizational Chart**



Division of Learning Innovation

Department of Interpretation and Participatory Experiences/ IPE

IPE provides volunteer-facilitated learning experiences that inspire visitors to discover personal meanings in art and explore museums confidently on their own.

- Docent Program
- Art Adventure Guide Program
- Collection in Focus Program

The Collection in Focus Program

- Est. 1998 with significant community input
- Volunteer opportunity that trains museum guides to be specialists in selected areas of the MIA's permanent collection
- Thursday evening and weekend opportunity designed to appeal to busy adults from diverse backgrounds
- 18-month minimum initial commitment (training + evaluation + 1 year of volunteering)
- Volunteer service: 24 hours/year minimum
- Tours, Gallery Conversations & Art Carts

Class Procedure

- Arrive before the start of class
 - 6:30 p.m. on Thursday
 - 10 a.m. on Saturday
- Access the Target on Saturdays by way of 3rd Avenue. (Target Wing opens at 10:00 a.m. T- Sa.)
- Sign in
- Find current handouts and assignments on the back table
- Leave assignments due in the basket
- Coffee, hot tea, and water provided, your own snacks welcomed
- All classroom sessions are recorded. Handouts and worksheets available online (mgpvolunteers.org) with PowerPoint slides

Meal and Snack options include:

bring your own bag lunch (refrigerator in the Tour Office)

Agra Culture Mezzanine Restaurant – Open Saturdays 11:00 – 2:30

Agra Culture Coffee Shop and Café - Open Museum Hours



MIA Policies

All of these documents are also posted on mgpvvolunteers.org

MIA Policy Packet

- Sign acknowledgment of receipt
 - Sexual Harassment Policy
 - Nonharassment Policy
 - Policy Against Workplace Violence
 - Drug and Alcohol Policy
 - Smoke-Free Facility

Volunteer Confidentiality Agreement

- 1 page document
- sign acknowledgement – witness (Ann and Laura)

Network, Email and Internet Policy

- 2 hardcopies on the back table
- Sign acknowledgement of receipt

Institutional Code of Ethics - Disclosure Statement for Volunteers/Interns

- 2 hardcopies on back table
- complete questions, sign and date

Mentorship Program

Current Guides

- Welcome new guides into the program and serve as a resource
- Provide practical experience in the galleries
- Share tour pointers and tips for tours and the Art Carts

New Guides-in-Training Mentorship Goals

- Attend at least one public tour and complete a reflection form
- Participate and observe at least one Art Cart and complete a reflection form to be turned in to IPE staff.
- Note: these observations are not evaluations of the tour or Art Cart guides, but rather reflections on their own strategies for the process.

Questions?



Websites to know...

www.artsmia.org

MIA's website

www.mgpvolunteers.org

website for all Museum Guide Program
Volunteers

www.artsconnected.org

website for searching the collections of the MIA
and Walker Art Center



Visual Thinking Strategies (VTS)



VTS Gallery Groups

Group 1

Britt Aamodt
Jenna Rose Bondeson
Margie Crone
Shawn Gilliam
Yung-Kang Jouseau
Shirley Kaiser
Barbara Newton
Ming Fen Wang

Group 2

Victoria Amaris
Mary DesRoches
Carmen Gwazdacz
Louise Hertsgaard
William Neumann
Mari Okoronkwo
Bryan Peffer
Robert Wood

Group 3

Scott Appelwick
Loddy Assad
Jean Ann Durades
James Eastman
Connie Falvey
Nahid Khan
Linda Pelham
Samrina Sabri

Group 4

Everett Bad Wound
Barbara Chase
Lucille Forcelle
Rebecca Haddad
Jettie Ann Hill
Gerry McGrane
Chad Snelson
Susan Spray
Marne Zafar

Group 5

Shelly Bertrand
Mingjen Chen
Rhonda Fox
Andrew Hong
Sarah McClure
Margo Squire
Linda Verbeck
Beth McCray

Group 6

Ann Besser
Beverly Cottman
Jacque Frazzini
Mark Hvisdack
Liliana Martinez-Criego
Victoria Neis
Chris Vickery
Sandra Wethers

Contact Information

Ann Isaacson, Senior Educator, IPE

612-870-3089

aisaacson@artsmia.org

Laura Scroggs, CIF Fellow, IPE

612-870-6370

lscroggs@artsmia.org